



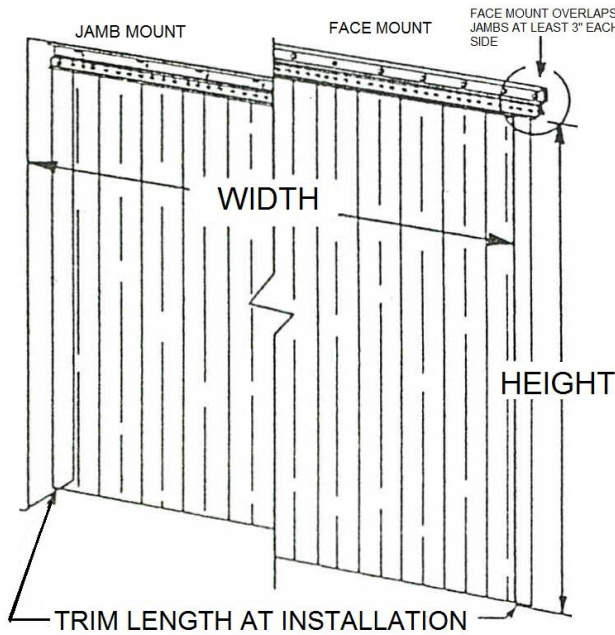
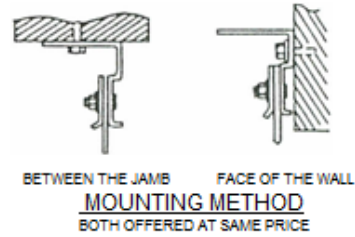
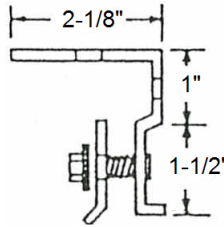
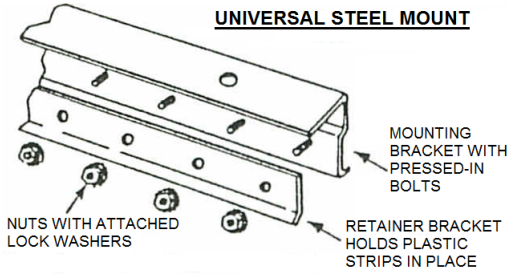
ROTARY PRODUCTS INC  
202 E. HIGH STREET  
PO BOX 370  
ASHLEY, OH 43003

# ROTARY PRODUCTS INC

PHONE: 800-457-5251  
740-747-2623  
FAX: 740-747-2188

[www.rotaryproductsinc.com](http://www.rotaryproductsinc.com)  
RPISEAL@AOL.COM

## UNIVERSAL STEEL MOUNT STRIP DOOR SPECIFICATION SHEET



**MOUNTING METHOD:**  Between the Jamb  
 Face of the Wall

**DOOR SIZE:** WIDTH: \_\_\_\_\_  
HEIGHT: \_\_\_\_\_

Universal Steel Mount Bracket is galvanized and has 1/4-inch x 1-inch studs permanently affixed on 2" centers. Strip Door comes preassembled in approximately \_\_\_\_\_ pieces.

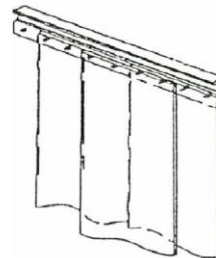
### OVERLAP OF PLASTIC STRIPS

STRIP WIDTH: \_\_\_\_\_

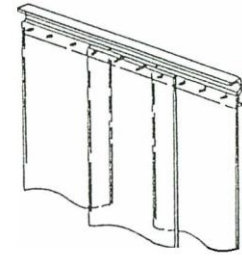
STRIP OVERLAP ON EACH SIDE: \_\_\_\_\_

PVC THICKNESS: \_\_\_\_\_

### PLASTIC STRIP OVERLAPPING SEQUENCE



FULL OVERLAP



REGULAR OVERLAP

Offset Double-Ribbed material available for extreme wear resistance.

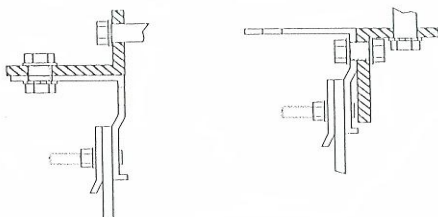


DISTRIBUTOR:	
CONTRACTOR:	
JOB:	
ARCHITECT:	
DRAWING #:	DATE:

- Standard Strip Mount
- Removable Strip Mount

### REMOVABLE MOUNT

Allows removal of strip door.  
For either Wall (left) or Jamb (right) mount.



- Standard Strip Material
- Ribbed Strip Material
- USDA (For Freezers and Coolers)
- Other: \_\_\_\_\_