

"ST" Series "SpeedTouch" Leveler Submittal Drawing

"ST" SPEEDTOUCH DOCK LEVELER MODEL SPECIFICATIONS

MODEL	LIP*	DECK**	NOMINAL LENGTH	WIDTH***	HINGE CF1045	SEAMLESS HINGE TUBE	OPERATING RANGE
ST6625 & 30 / ST7625 & 30	1/2" x 16"	1/4"	6'	72" / 83"	1" diameter	1 5/8" dia. O.D.	+12"-12"
ST6825 & 30 / ST7825 & 30	1/2" x 16"	1/4"	8'	72" / 83"	1" diameter	1 5/8" dia. O.D.	+12"-12"
ST6635,40&45	5/8" x 16"	1/4"	6'	72" / 83"	1 1/8" diameter	2" dia. O.D.	+12"-12"
ST7635,40,&45	5/8" x 16"	1/4"	6'	72" / 83"	1 1/8" diameter	2" dia. O.D.	+12"-12"
ST6835,40&45	5/8" x 16"	1/4"	8'	72" / 83"	1 1/8" diameter	2" dia. O.D.	+12"-12"
ST7835,40,&45	5/8" x 16"	1/4"	8'	72" / 83"	1 1/8" diameter	2" dia. O.D.	+12"-12"
ST61025 & 30	1/2" x 16"	1/4"	10'	72" / 83"	1" diameter	1 5/8" dia. O.D.	+16"-16"
ST71025 & 30	1/2" x 16"	1/4"	10'	72" / 83"	1" diameter	1 5/8" dia. O.D.	+16"-16"
ST61035, 40 &45	5/8" x 16"	1/4"	10'	72"	1 1/8" diameter	2" dia. O.D.	+16"-16"
ST71035, 40, & 45	5/8" x 16"	1/4"	10'	83"	1 1/8" diameter	2" dia. O.D.	+16"-16"

INSERT SPECIFIC JOB REQUIREMENTS FROM CHART

--	--	--	--	--	--	--	--

STANDARD CAPACITY

A.N.S.I. CAPACITY

--	--

*Lip and deck, 55,000 lb. minimum yield steel, 3 year structural warranty.

**Models with deck width of 78" (6 1/2') are available upon request.

STANDARD FEATURES

- (2) Molded Bumpers
- Lip 16"
- Grease Fittings
- Working Range Toe Guards
- Dual 60,000lb Safety Legs
- Air Lines
- Air Operated Hold Down
- Lip Keepers/Night Locks
- Direct Extension Spring Counter Balance (no moving parts)
- Yellow & Black Diagonal Safety Stripe on Toe Guards
- Structural "C" Channel Deck Support
- Maintenance Strut

OPTIONAL FEATURES

- Lip 18"
- Lip 20"
- Abrasive Deck
- Below Dock Control
- Hot Dip Galvanize
- Full Range Toe Guards (Powder Coat Yellow)
- Laminated Bumpers
- Weather Seals (side & rear)
- Hydra-Lip (lip closes quietly)
- Foam Insulation

Rotary Products Inc.

202 East High St. PO Box 370 Ashley Ohio, 43003
 Phone #: 1-800-457-5251 Fax #: 740-747-2188

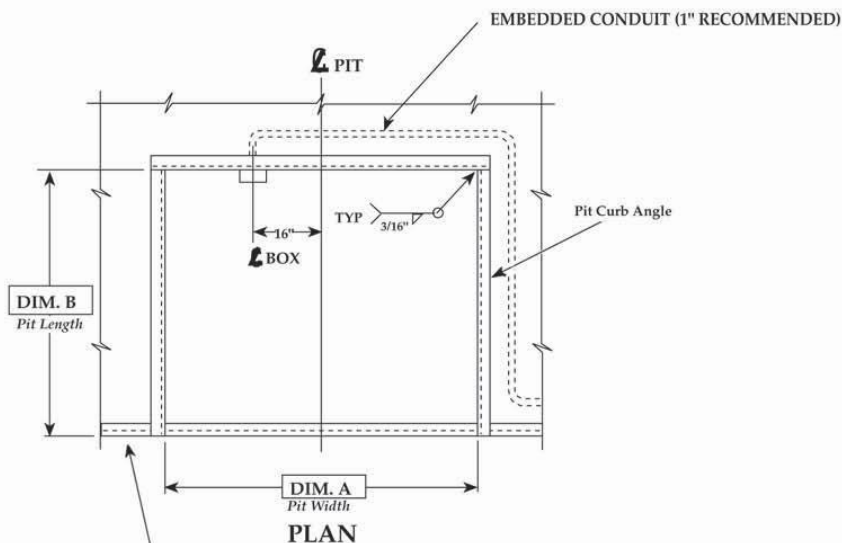


Size

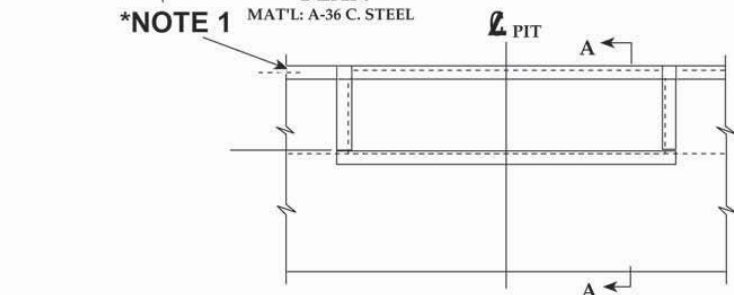
JOB

--

"ST" Series "SpeedTouch" Leveler Pit Detail



***NOTE 1** MAT'L: A-36 C. STEEL



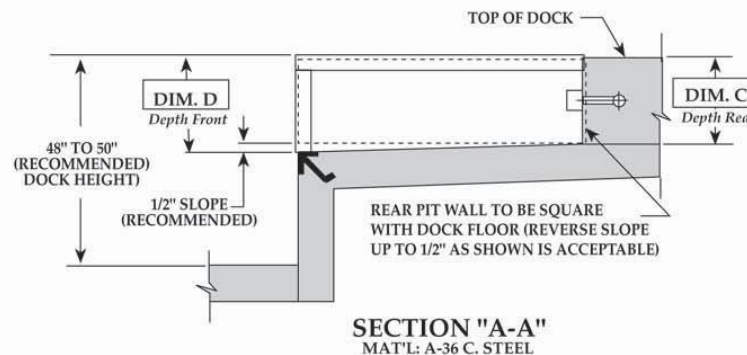
***NOTE 1:** Angle 3"x3"x1/4"x20"
Minimum Length or Run
Continuous Pit to Pit.
(Supplied By Others)

FRONT ELEVATION
MAT'L: A-36 C. STEEL

VARIABLE DIMENSIONS				
MODEL SIZE	"A"	"B"	"C"	"D"
6'W x 6'L	74"	63"	19 1/2"	20"
6'W x 8'L	74"	87"	19 1/2"	20"
6'-6"W x 6'L	80"	63"	19 1/2"	20"
6'-6"W x 8'L	80"	87"	19 1/2"	20"
7'W x 6'L	85"	63"	19 1/2"	20"
7'W x 8'L	85"	87"	19 1/2"	20"
6'W x 10'L	74"	111"	23 1/2"	24"
6'-6"W x 10'L	80"	111"	23 1/2"	24"
7'W x 10'L	85"	111"	23 1/2"	24"

INSERT SPECIFIC JOB DIMENSIONS FROM CHART

--	--	--	--



SECTION "A-A"
MAT'L: A-36 C. STEEL

DRAWN:	SCALE:	DATE:	DRAWING NUMBER:
J.M.G.	AS NOTED	1/30/95	PMI-2014-R1

TOLERANCES:		
Inch Dimension =	Decimal Dimension =	Angles =
1/16"	.005	1°

JOB

Rotary Products Inc.

202 East High St. PO Box 370 Ashley Ohio, 43003
Phone #: 1-800-457-5251 Fax #: 740-747-2188

