

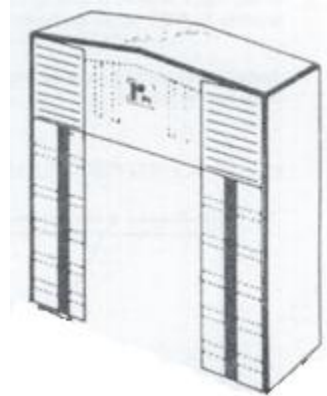


202 East High St P.O. Box 370 Ashley, OH 43003  
Call Toll Free: 1-800-457-5251 (740)-747-2623  
Fax: (740)-747-2188

## INSTALLATION INSTRUCTIONS FOR SH-402SS SOFT SIDED TRUCK SHELTER

### PARTS LIST:

1. Two steel shelf angles
2. Right soft sided vertical
3. Left soft sided vertical
4. Rigid header (Frame of 2 x 6 & 2 x 4 construction)
5. One translucent fiberglass light panel
6. Right vertical vinyl curtain
7. Left vertical vinyl curtain
8. Vinyl header curtain
9. Two bumper pillows
10. Box of hardware

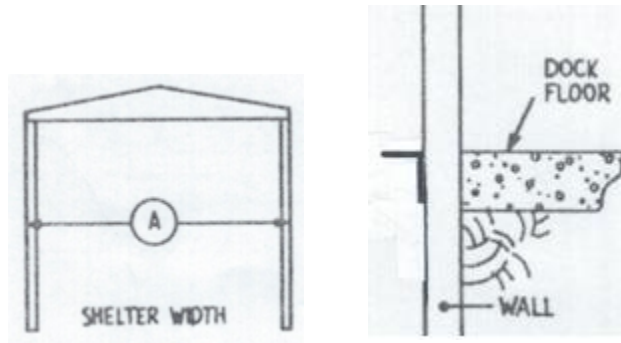


CONTENTS OF HARDWARE BOX: Set of instructions

- |                            |                                 |                          |
|----------------------------|---------------------------------|--------------------------|
| 1- Bag of Nails for Header | 12 - Angle Brackets             | 2 - Shelf Brackets       |
| 32 - 3/8" Lag Screws       | 6 - 3/8" Washers                | 10 - 1/4" Carriage Bolts |
| 10 - 1/4" Washers          | 10 - 1/4" Nuts                  | 1 - Large Eye Screw      |
| 4 - 41" Rubber straps      | 2 - Head Frame Support Brackets |                          |

**\*CHECK PACKAGES TO MAKE SURE ALL PARTS ARE ACCOUNTED FOR\***

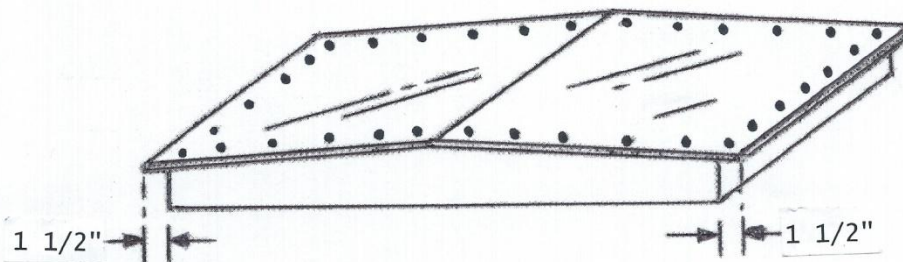
**ALL DIRECTIONS ARE GIVEN FACING BUILDING.**



**FIGURE 1- LOCATION & INSTALLATION OF STEEL SHELF ANGLE BRACKETS**

**(1) TO LOCATE SHELF ANGLE BRACKETS TAKE THE WIDTH OF THE UNIT, DIMENSION A, WHICH EQUALS THE LENGTH OF THE RIGID HEAD FRAME. (11'6" IS STANDARD BUT MAY VARY IN YOUR UNIT.) FIND THE CENTER LINE OF DOOR AND MEASURE OUTWARD ½ OF UNIT WIDTH. THIS WILL GIVE YOU THE OUTSIDE EDGE OF THE SHELF ANGLE BRACKETS. OUTSIDE TO OUTSIDE OF BRACKETS WILL BE THE WIDTH OF THE UNIT. INSTALL SO TOP OF SHELF BRACKET IS LEVEL WITH DOCK FLOOR (SEE FIGURE 1).**

**(2) INSTALL VERTICAL SIDE PADS TO BUILDING WITH ANGLE BRACKETS PROVIDED. THE OUTSIDE TO OUTSIDE DIMENSION OF THE VERTICALS IS THE SAME AS THE LENGTH OF THE RIGID HEADER.**



**FIGURE 2 - ATTACHING TRANSLUCENT PANEL ON RIGID HEADER**

**(3) ATTACH TRANSLUCENT FIBERGLASS LIGHT PANEL TO THE TOP OF THE RIGID HEADER FRAME USING ROOFING NAILS PROVIDED. CENTERED LIGHT PANEL SHOULD HANG OFF EDGE ABOUT 1 ½" ON EACH SIDE. THE HEADER LIGHT PANEL IS THREE INCHES LONGER THAN THE HEADER: THIS ALLOWS 1 ½ INCHES TO EXTEND AT EACH END (SEE FIGURE 2).**

**(4) SCREW EYE LAG INTO PRE-DRILLED HOLE IN CENTER OF BOTTOM OF OUTSIDE HEADER FRAME BOARD.**

ATTACH HEADER  
BY BOLTING THROUGH BACK BOARD

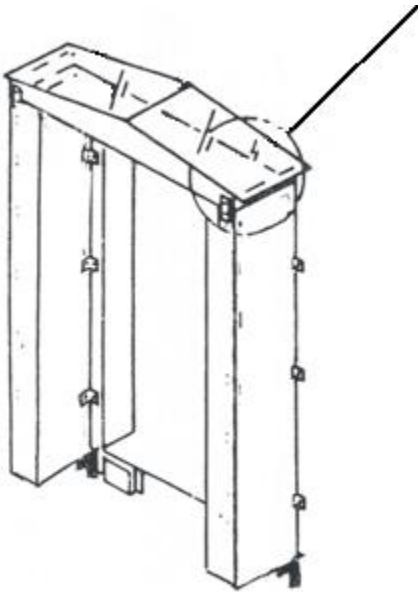


FIGURE 3 - MOUNTING HEADER TO VERTICAL PANELS

(5) LIFT HEAD FRAME AND REST ON TOP OF VERTICAL SIDES.

(6) ATTACH HEADER FRAME TO BUILDING BY BOLTING THROUGH BACK BOARD OF FRAME TO BUILDING (SEE FIGURE 3).

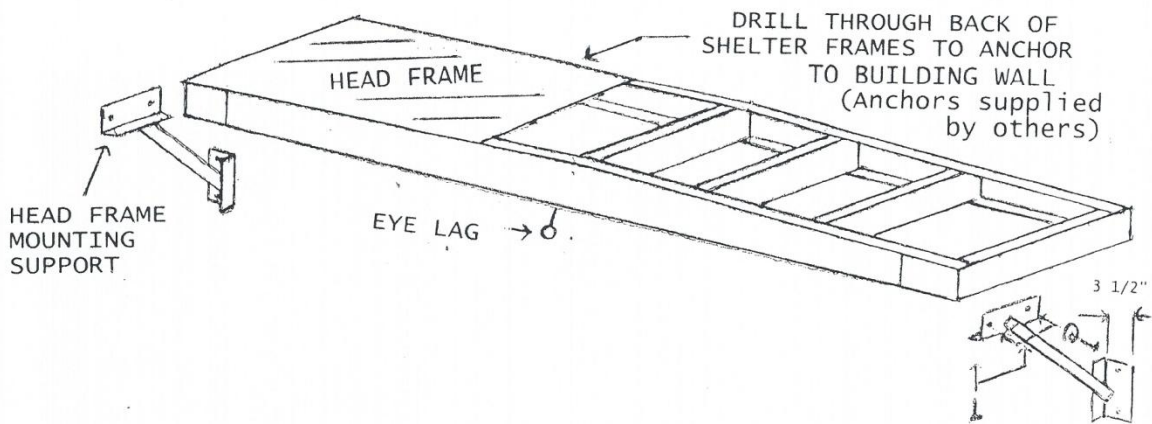
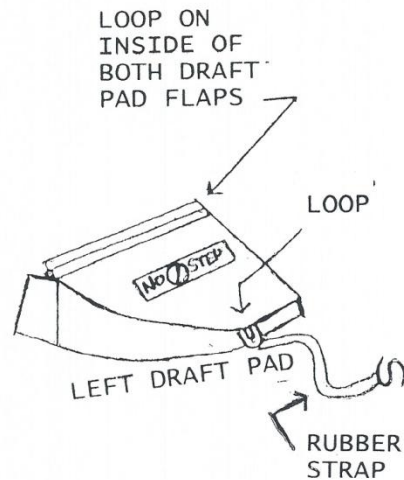


FIGURE 4 - ATTACHING HEAD FRAME MOUNTING SUPPORTS

**(7) ATTACH HEAD FRAME MOUNTING SUPPORTS TO BUILDING (SEE FIGURE 4). PLACE THEM SO L BRACKET CRADLES BOTTOM OF HEAD FRAME. THE VERTICAL LEG OF THIS BRACKET ATTACHES TO HEAD FRAME WITH ONE LAG SCREW AND ONE CARRIAGE BOLT. (BOTH PROVIDED.)**

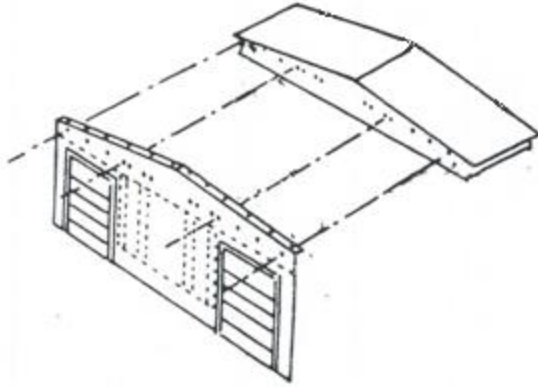
**(8) THERE IS A 3 ½" FLAP SEWN TO THE TOP OF THE VERTICAL PADS FLIP THE FLAP UP TO COVER THE ENDS OF THE HEAD FRAME AND NAIL WITH ROOFING NAILS PROVIDED.**



**FIGURE 5 – ATTACHING BOTTOM CORNER PILLOWS (DRAFT PADS)**

**(9) ATTACH BOTTOM CORNER PILLOWS (DRAFT PADS). 21" RUBBER STRAPS ARE ATTACHED TO LOOP SEWN IN PILLOW. ATTACH THE OTHER END OF THE RUBBER STRAP TO THE SIDE OF BACKER BOARDS OF VERTICAL PADS USING A LAG AND WASHER (SEE FIGURE 5).**

**(10) ATTACH VINYL VERTICALS TO FOAM VERTICALS AS STRAIGHT AND TRUE AS POSSIBLE.**

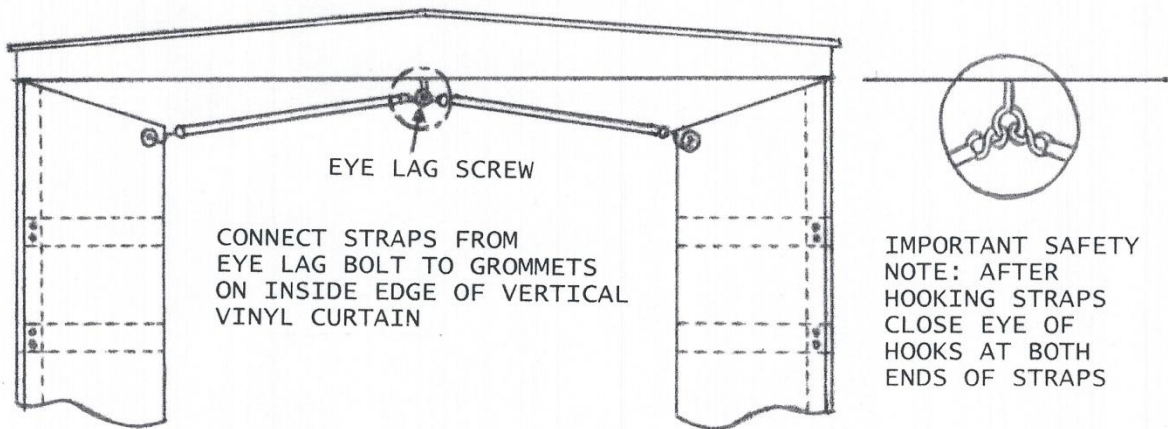


**FIGURE 6 – ATTACHING VINYL HEADER CURTAIN**

**(11) SLIP CARRIAGE BOLT THROUGH THE FARTHEST LEFT HOLE OF THE PREDRILLED HOLES IN THE HEADER CURTAIN (SEE FIGURE 6). THESE HOLES ARE THROUGH THE COVER AND THROUGH THE HOLE IN THE SPRING STEEL STAYS ALREADY INSERTED IN THE CURTAIN.**

**(12) LIFT THE HEADER CURTAIN UP AND TAP A CARRIAGE BOLT INTO THE FARTHEST LEFT PREDRILLED HOLE IN HEADER FRAME. PUT A WASHER AND NUT ON THIS BOLT, WHICH IS NOW PROTRUDING THROUGH FRONT HEAD FRAME BOARD. (THIS WILL LOCATE THE HEAD CURTAIN SO THE REST OF THE HOLES WILL LINE UP.)**

**(13) TAP IN THE OTHER SEVEN BOLTS AT TOP OF SPRING STEEL STAYS USE WASHERS AND NUTS PROVIDED TO SECURE CURTAIN TO FRAME.**

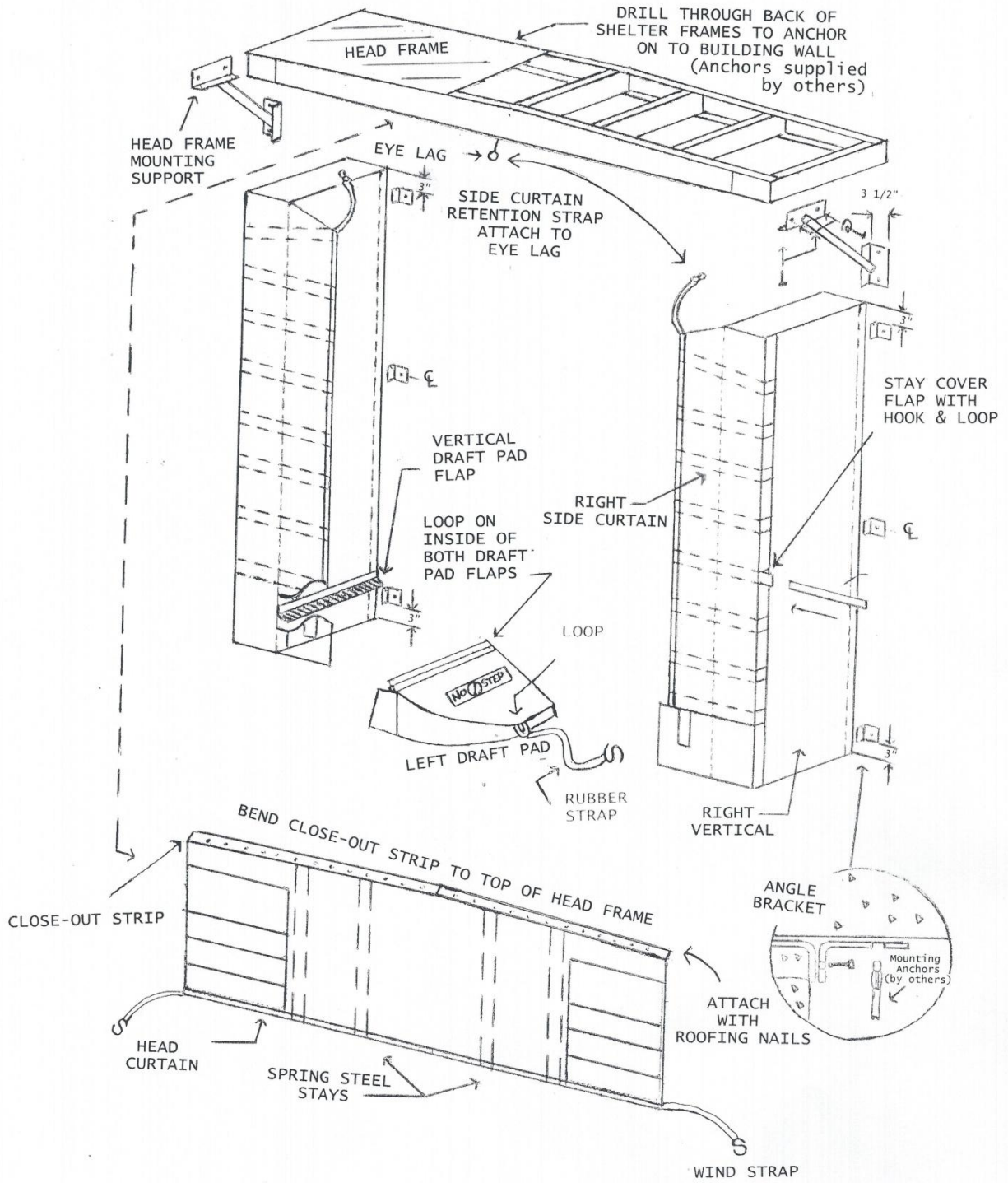


**FIGURE 7 – ATTACHING RUBBER STRAPS**

**(14) HOOK RUBBER STRAPS AT TOP OF VERTICAL CURTAINS TO EYE BOLT ON BOTTOM OF HEADER FRAME (SEE FIGURE 7).**

**(15) ATTACH RUBBER STRAPS AT ENDS OF HEAD CURTAIN TO SIDE OF BACKER BOARD OF VERTICAL PADS.**

**(16) FOLD CLOSEOUT STRIP AT TOP OF HEAD CURTAIN OVER TOP OF HEAD FRAME AND ATTACH WITH ROOFING NAILS THROUGH BRASS GROMMETS IN CURTAIN.**



# GENERAL SPECIFICATIONS

## SH402SS - SOFT SIDED TRUCK SHELTER

STANDARD DIMENSION 11'6" WIDE X 11' HIGH OUTSIDE TO OUTSIDE

### STANDARD PROJECTIONS

SH402-18-SS 18" PROJECTION

SH402-24-SS 24" PROJECTION

SH402-30-SS 30" PROJECTION

SH402-36-SS 36" PROJECTION

SH402-42-SS 42" PROJECTION

### VERTICAL SIDES

VERTICAL SIDES SHALL BE CONSTRUCTED OF A DENSE POLYURETHANE FOAM RUBBER MINIMUM 1.5 LBS DENSITY AND 45 LBS COMPRESSION. SIDES WILL HAVE 6" FACE AND 2 X 8 BACKER BOARD. THEY WILL BE 10'6" HIGH. COVER WILL BE 22 OZ PER SQUARE YARD VINYL COATED NYLON. VERTICAL SIDES SHALL HAVE 4" WIDE TOUCH AND HOLD VELCRO RUNNING THE LENGTH OF EACH SIDE FOR COVER ATTACHMENT.

### HEAD FRAME

HEAD FRAME SHALL BE CONSTRUCTED OF 2 X 4 AND 2 X 6 PRESERVATIVE TREATED LUMBER. HEADER FRAME IS SLOPED 2" FOR WATER RUN OFF. HEAD FRAME TO HAVE ONE 1 ½" X 1 ½" X 3" ZINC PLATED ANGLE AT EACH CORNER. TRANSLUCENT LIGHT PANEL TO COVER ENTIRE HEAD FRAME PLUS AN ADDITIONAL 1 ½" ON EACH SIDE. HEAD FRAME IS SUPPORTED ON EACH SIDE WITH HEAVY DUTY STEEL BRACES THAT ANGLE BACK TO BUILDING.



### VERTICAL COVERS

VERTICAL COVERS SHALL BE CONSTRUCTED PRIMARILY OF 40 OZ PER SQUARE YARD VINYL COATED NYLON WITH HIGH TEAR DUOPRENE VINYL AT THE HIGH WEAR AREAS. INCLUDED IN HIGH WEAR AREAS ARE 22" X 20" REINFORCING FLAPS AT THE BOTTOM OF EACH VERTICAL COVER, A 6" STRIP DOWN THE OUTSIDE EDGE OF EACH VERTICAL AND 3" STRIPS COVERING SPRING STEEL STAYS.

EACH VERTICAL COVER WILL HAVE SEVEN BLUE TEMPERED SPRING STEEL STAYS, .042" X 2" X 24" VERTICAL COVER WILL HAVE TWO 4" WIDE VELCRO STRIPS RUNNING THE LENGTH THAT ATTACH TO EACH SIDE OF THE VERTICAL PAD. EACH VERTICAL COVER WILL ALSO HAVE A FULL LENGTH YELLOW GUIDE STRIPE.

### HEADER COVER

HEADER COVERS SHALL BE CONSTRUCTED PRIMARILY OF 40 OZ PER SQUARE YARD VINYL COATED NYLON WITH HIGH TEAR DUOPRENE VINYL AT THE HIGH WEAR AREAS. INCLUDED IN HIGH WEAR AREAS ARE FOUR - 12" X 28" HIGH TEAR DUOPRENE VINYL WEAR SHIELDS ON EACH SIDE. THE HIGH TEAR DUOPRENE IS ALSO USED TO COVER THE SPRING STEEL STAYS. HEADER COVER HAS FOUR BLUE TEMPERED SPRING STEEL STAYS .042" X 2" X 30".

### BOTTOM CORNER PILLOWS

THERE SHALL BE TWO BOTTOM CORNER PILLOWS PER UNIT. BOTTOM CORNER PILLOWS WILL BE CONSTRUCTED OF POLYURETHANE FOAM COVERED IN 22 OZ PER YARD VINYL COATED NYLON. PILLOWS ARE ATTACHED TO SIDE PADS VIA A 3" WIDE TOUCH AND HOLD FASTENING SYSTEM.