

SECTION 1

INSTALLATION INSTRUCTIONS RECEIVING AND HANDLING

RECEIVING:



WARNING

WARNING! Use caution when unbanding the EOD Leveler. Keep hands clear of pinch points and wear appropriate safety attire - Glasses, Gloves, and Work Boots.

Check for possible damage or missing parts immediately upon receipt of unit. Note any damage on receiving papers.

Prepare any claims against carrier if necessary.

NOTE: Damage noticed after receipt must be reported to carrier within 15 days.

HANDLING:



WARNING

WARNING! Use caution when lifting or moving the EOD Leveler. DO NOT ATTEMPT to lift without suitable hoisting equipment capable of lifting as much as 600 lbs.

Unit is easily handled for installation by hooking a heavy chain to each buttonhead rivet.

INSTALLATION INSTRUCTIONS INSTALLATION

GENERAL INFORMATION:



WARNING

DO NOT EXCEED DOCK LEVELER CAPACITY. OVER LOADING DOCK LEVELER COULD RESULT IN SERIOUS INJURY OR DEATH.

Top of Dock Levelers are designed to service trailers 10" above to 4" below dock level.

Prior to installation, clean the dock face and dock area.

All prepunched holes are 13/16" diameter. Use 4" to 6" x 3/4" anchor bolts.



WARNING: Before you start to install the leveler, use proper safety signs and barriers to separate the work area from the remainder of the dock.



SECTION 1

INSTALLATION INSTRUCTIONS INSTALLATION

1. Remove all existing bumper materials and obstructions from dock edge and sweep clean.
2. Place unit at desired location on dock surface with base plate of unit tight against dock face. Remove shipping bands from hydraulic cylinder and mounting bracket. Place bracket on anchor bolts and tighten nuts in place. (Do not attach cylinder).
3. Anchoring: use 13/16" holes in leveler as guides for drilling holes in concrete. Use 5/8" x 5" (min.) anchors.
 1. Extend lip forward and support safely with timber brace or other secure means.
 2. Drill and anchor two outside holes in base plate and draw unit tight to dock.
 3. Proceed to rear of unit and anchor all six bolts.
 4. Next, anchor side brackets.
 5. Complete anchoring base plate either by continuous welding to dock edge steel, or bolting all six holes.
 6. Set bump blocks in place on each side of unit and secure by welding to dock edge steel and bolting to dock if steel is less than 6" channel or angle. Anchors at rear must be welded to deck plate, cut off, and ground down to no more than 1/4" above deck surface. Tack weld all hex nuts to leveler and bumpers.

4. Install cylinder (hose entrance at bottom) on lower mounting tab then connect to top tab. Lock clevis in place with keys. Connect free end of hydraulic hose to pump fitting. Check fluid level to insure reservoir is full replace plug cap with vent cap supplied with unit.
5. Connect electrical according to prevailing codes. Standard motor: 1 h - 1ph - can be wired for 110 or 220 volts.
6. Check operation to insure unit works correctly. Unit should raise and lip will extend and lock in position. When unit settles to floor of trailer lip lock will disengage. Unit may be recycled with truck in place by raising unit until lip edge clears the rear of trailer then releasing switch.

**WARNING**

All anchor bolts must be installed in accordance with the manufacturer's instruction. Improper installation may result in serious personal injury or death.

DO NOT install anchor bolts in cracks of expansion joints in concrete. Installation in cracks or expansion joints may cause the anchors to come loose and pull out. Use of improperly installed anchor bolts may result in serious personal injury and/or death.

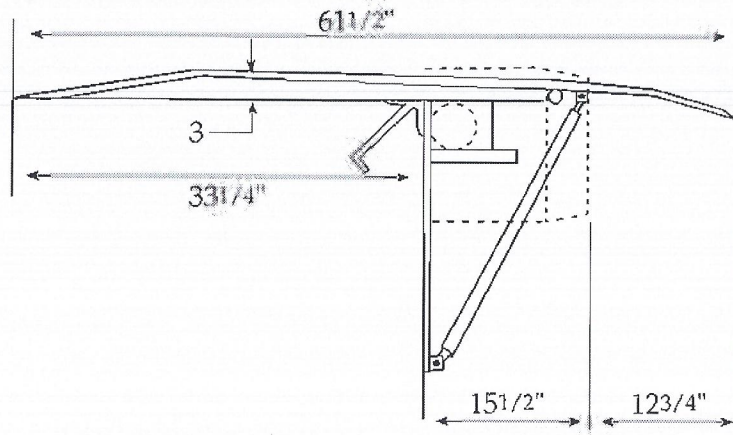
NOTE:

All anchor bolts lengths must suit local codes and conditions. Type and depth of concrete will determine type and length of anchor bolts required.

SECTION 1

INSTALLATION INSTRUCTIONS INSTALLATION

Illustration: 6



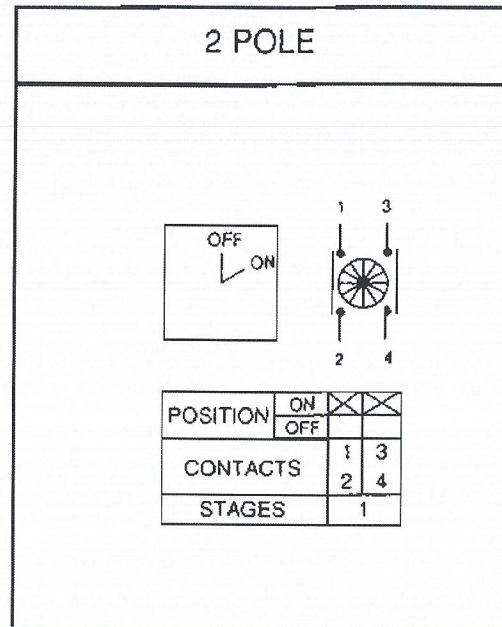
Side View - HTD Series

Units are shipped filled with aircraft hydraulic fluid. Check fluid level upon installation.

IMPORTANT! Replace plug cap with breather cap provided. DAMAGE COULD OCCUR!

SECTION 1

INSTALLATION INSTRUCTIONS ELECTRIC



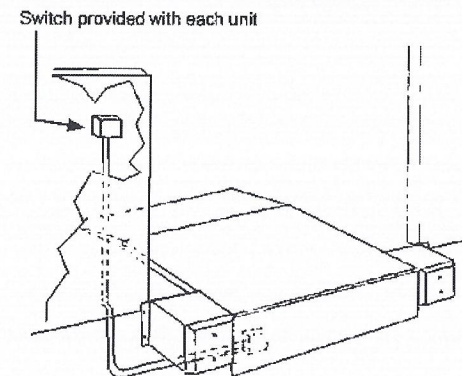
Note:
Diagram represents
Single Phase ONLY

Motor may be wired for 120V/1 phase, 240V, 1 phase or 208/240/460V 3 phase. (Please specify when ordering.)

N.E.M.A. approved switch shipped with each unit.

Install conduit and wiring as per electrical schematic instructions.

Conduit may be run externally for existing construction installation.



SECTION 1

TEST OPERATION

Test operate unit:

Insure breather cap is in place of plug in reservoir.

Depress button (or turn switch) to raise unit. As unit raises, lip will extend. When lip extends, release button (switch). Unit will lower to truck bed. IF A VEHICLE IS NOT PRESENT, RESET LEVELER BY MANUALLY LIFTING LIP.

ENSURE UNIT RESTS ON SUPPORT GUSSETS IN STORED POSITION. NO WEIGHT SHOULD BE RESTING ON HYDRAULIC CYLINDER SHAFT.

Section 2

MAINTENANCE

WEEKLY MAINTENANCE

CAUTION:
**ALWAYS BRACE LEVELER SECURELY
AND SAFELY WHEN MAINTENANCE IS
REQUIRED.**

Check unit for leaks.

Check unit for physical damage.
-Cracks in tubes and welds

Check installation

MONTHLY MAINTENANCE

Check fluid levels

YEARLY MAINTENANCE

Lubricate hinges and all other moving parts.

Check rubber bumpers.

5 YEAR MAINTENANCE

Replace hydraulic fluid.

HYDRAULIC FLUID:

Use aircraft fluid or Dextron III for normal operation.

For extremely cold regions fluid can be replaced by an arctic grade (or aircraft) hydraulic fluid. Check local distributors for availability.



WARNING

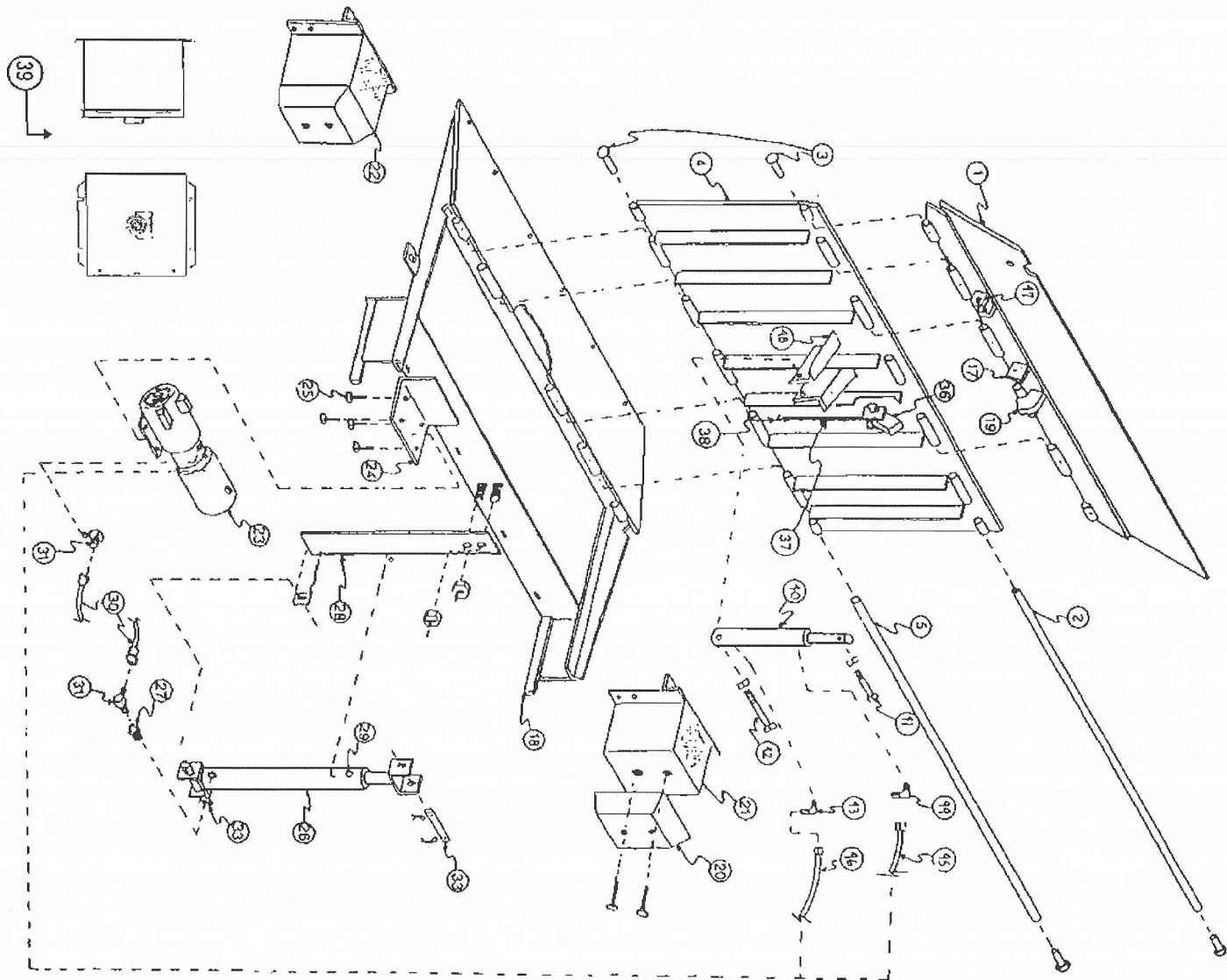
WARNING! DO NOT allow lip and ramp to fall free. Allowing dock leveler to fall free could result in dock leveler coming free from dock or damaging tabs resulting in property damage, serious injury and/or death.

HTD Series Hydraulic Top-Of-Dock

Illus#	Part#	Part Description
1	373	Lip Plate Assy. (HTD72)
1	375	Lip Plate Assy. (HTD72H)
2	189	Lip Hinge Pin
3	188	Rivet (4 ea req)
4	378	Deck Plate Assy. (HTD72)
4	379	Deck Plate Assy. (HTD72H)
5	189	Deck Hinge Pin
17	319	Lip Tab
18	311	Lip Stop Bar
19	1053	Lip Lock Stop
20	9243	Molded Cord Bumper - (2 hole) 4" x 10" x 12"
20	137	Molded Cord Bumper - (4 hole) 4" x 12" x 13"
20	500	Molded Cord Bumper - 4" x 10" x 18"
21	2159D	Bump Block Steel w/ Cover (2 hole)
21	309	Bump Block Steel w/ Cover (4 hole)
21	899	18" Bump Block Steel w/ Cover
22	2159	10" Bump Block Assy. (2 hole)
22	310	12" Bump Block Assy. (4 hole)
22	397	18" Bump Block Assy.
23	9408	Motor Pump & Resv. - 1 hp, 1 ph (3/4 hp)
23	9225	Motor Pump & Resv. - 1 hp, 3 ph (3/4 hp)
24	243	Motor Mounting Plate
25	256	Motor Mounting Bolt Assy. (4 ea. Req.)

Illus#	Part#	Part Description
26	281	Hydraulic Cylinder - Deck
27	285	Reducer Fitting
28	280	Cylinder Mounting Assy.
29	282	Breather Fitting
30	283	Hydraulic Hose - Deck Cylinder
31	284	Elbow Fitting
33	A51	Deck Cylinder Mounting Pins (set of 2)
34	288	Deck Chain Assy. (2 req) (old style)
36	1151	Lip Lock Assy. (w/ Pin & Keys)
37	A17	Lip Lock Spring
38	A13	"S" Hook
39	***	Control Box
40	9231	Lip Cylinder
41	2183	Lip Cylinder Upper Mounting Bolt (3/8" x 3 1/4")
42	2184	Lip Cylinder Lower Mounting Bolt (3/8" x 4 5/8")
43	9227	Lip Cylinder Lower Elbow Fitting (Pressure Side)
44	9267	Lip Cylinder Upper Elbow Fitting (Return Line)
45	9357	Lip Cylinder Return Line (Clean)
46	546	Lip Cylinder Hose
47	245	Lip Cylinder Mounting Tab (2 req)
48	244	Lip Cylinder Mounting Angle (2 req)

HTD Hydraulic Top-Of-Dock Exploded View



Section 3

OPERATING INSTRUCTIONS

Step 1

With leveler in stored position, back truck into position against the bumpers.

CAUTION:
ALWAYS CHOCK TRUCK WHEELS AND ENGAGE TRAILER RESTRAINT BEFORE LOADING AND UNLOADING.

Step 2

Remove end load, if any, from truck with leveler in stored position.

Step 3

Raise leveler by applying pressure to (turning) the wall mounted switch.

Release button (switch) when both sections of leveler are fully raised. Unit will automatically lower to truck floor.

When truck departs, unit will return to stored position.

Step 4

Unit may be recycled with truck in position against the bumpers.

1. Apply pressure to (turn) the wall switch. Center plate section of unit will raise off the truck floor.
2. Release the button (switch) as soon as the leading edge of the lip plate section clears the rear edge of the truck. The unit will tuck itself and return to the stored position.

Section 4

TROUBLESHOOTING

Lip not returning to stored position	<ol style="list-style-type: none">1. Check for debris, lubricate if needed.2. Visually check lip cylinder for damage.
Unit not descending.	<ol style="list-style-type: none">1. Check pullover chain/spring to ensure they are connected.2. Shuttle valve not properly adjusted.
Unit descending too slowly or quickly.	<ol style="list-style-type: none">1. Adjust descend valve<ul style="list-style-type: none">• clockwise slows descent• counter clockwise accelerates descent
Unit not raising (motor running)	<ol style="list-style-type: none">1. Visual check of hydraulic fluid tank. Should be 1/2 to 3/4 full.2. Viscosity of fluid has failed.<ul style="list-style-type: none">• Change to an arctic temperature type to prevent motor/pump burnout.3. Consult factory.
Unit not raising (motor not running)	<ol style="list-style-type: none">1. Check electrical hook up - voltage, phase, and wiring.2. Motor/pump damaged - requires replacement.