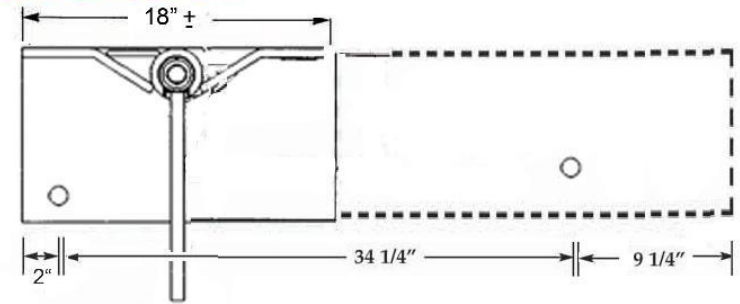
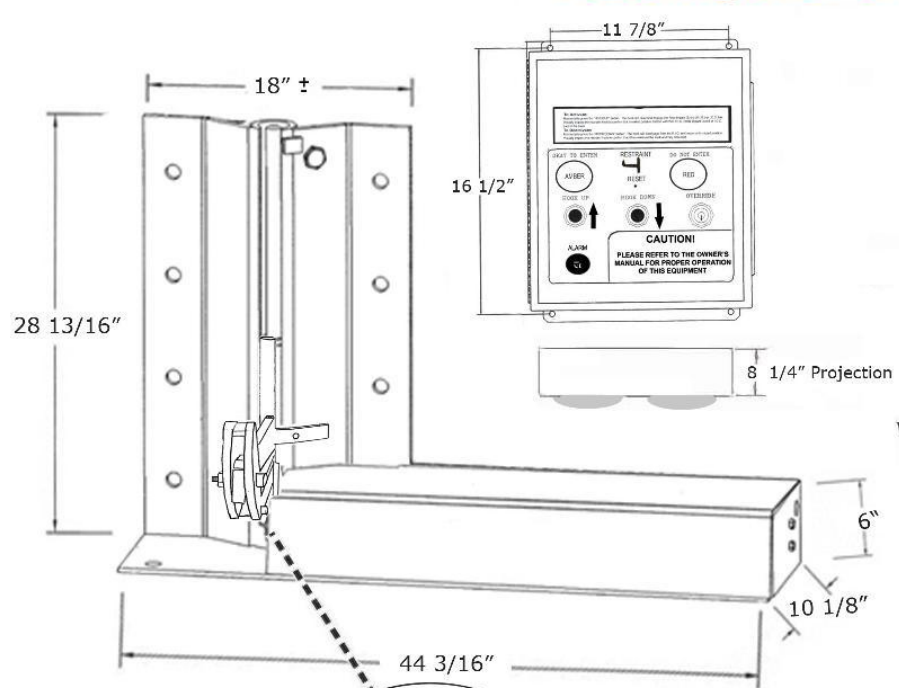
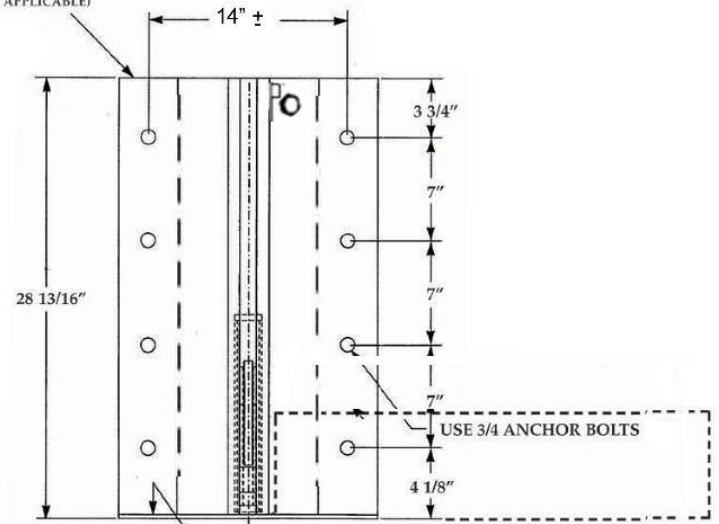


"EVR750" Series Eletrical Truck Restraint Detail

Featuring the *ForceFlex* Hook

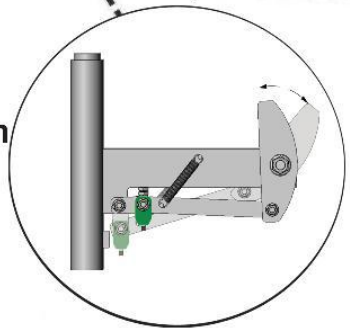


WELD HERE TO FRONT OF PIT BASE ANGLE (IF APPLICABLE)



STAKES CAN ALSO BE USED

ForceFlex
Hook Design



Rotary Products Inc.

202 East High St. PO Box 370 Ashley Ohio, 43003
Phone #: 1-800-457-5251 Fax #: 740-747-2188



JOB

"EVR750" Series Electrical Truck Restraint Submittal Drawing

Featuring the ForceFlex Hook

STANDARD FEATURES

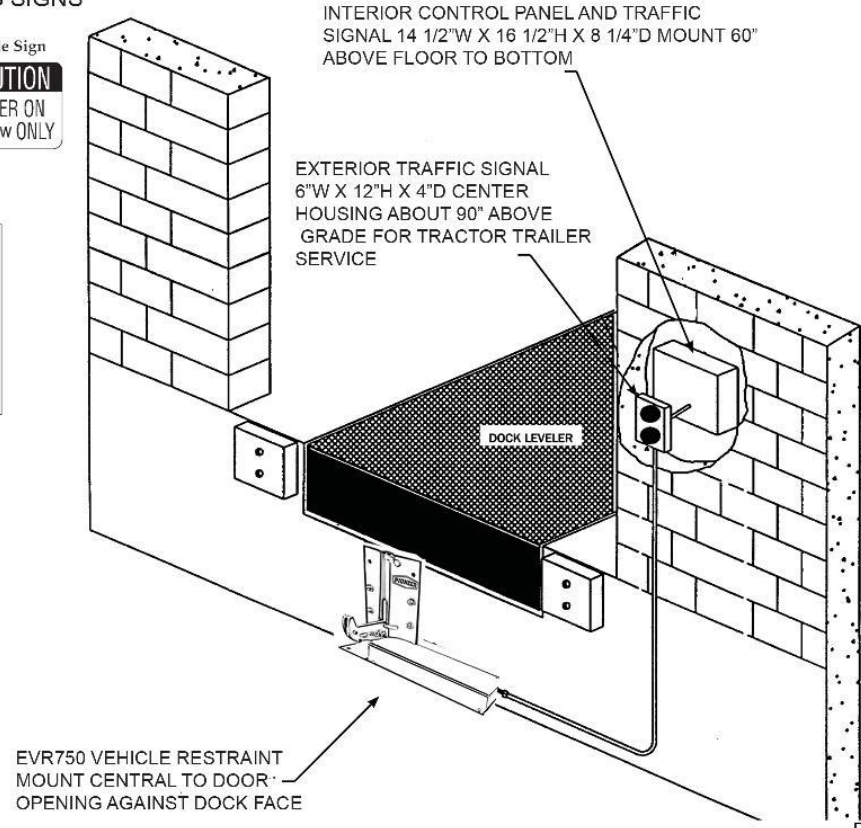
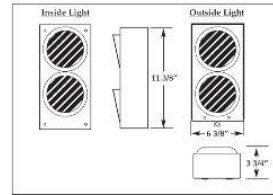
- ✓ Automatic unit provides in excess of 37,000 lbs. restraining force
- ✓ Wide 12" - 30" operating range
- ✓ Captures and holds all legal R.I.G.'s
- ✓ Non-impact operation - designed to meet 1998 ICC regulations
- ✓ Positive contact hook automatically floats up or down with trailer
- ✓ Automatic inside/outside light system
- ✓ Complete inside/outside sign package included
- ✓ Bolt hole pattern designed for optional holding force
- ✓ Low maintenance
- ✓ Approximately one (1) hour installation time

(Not including electrical wiring).

OPTIONAL FEATURES

- Steel mounting plate for new construction
- Steel blockouts for bumper projections greater than 4" including edge-of-dock levelers
- Template for pre-mounting attachment bolts

INSIDE/OUTSIDE TRAFFIC DOCK LIGHT PACKAGE WARNING SIGNS



Rotary Products Inc.

202 East High St. PO Box 370 Ashley Ohio, 43003
Phone #: 1-800-457-5251 Fax #: 740-747-2188

