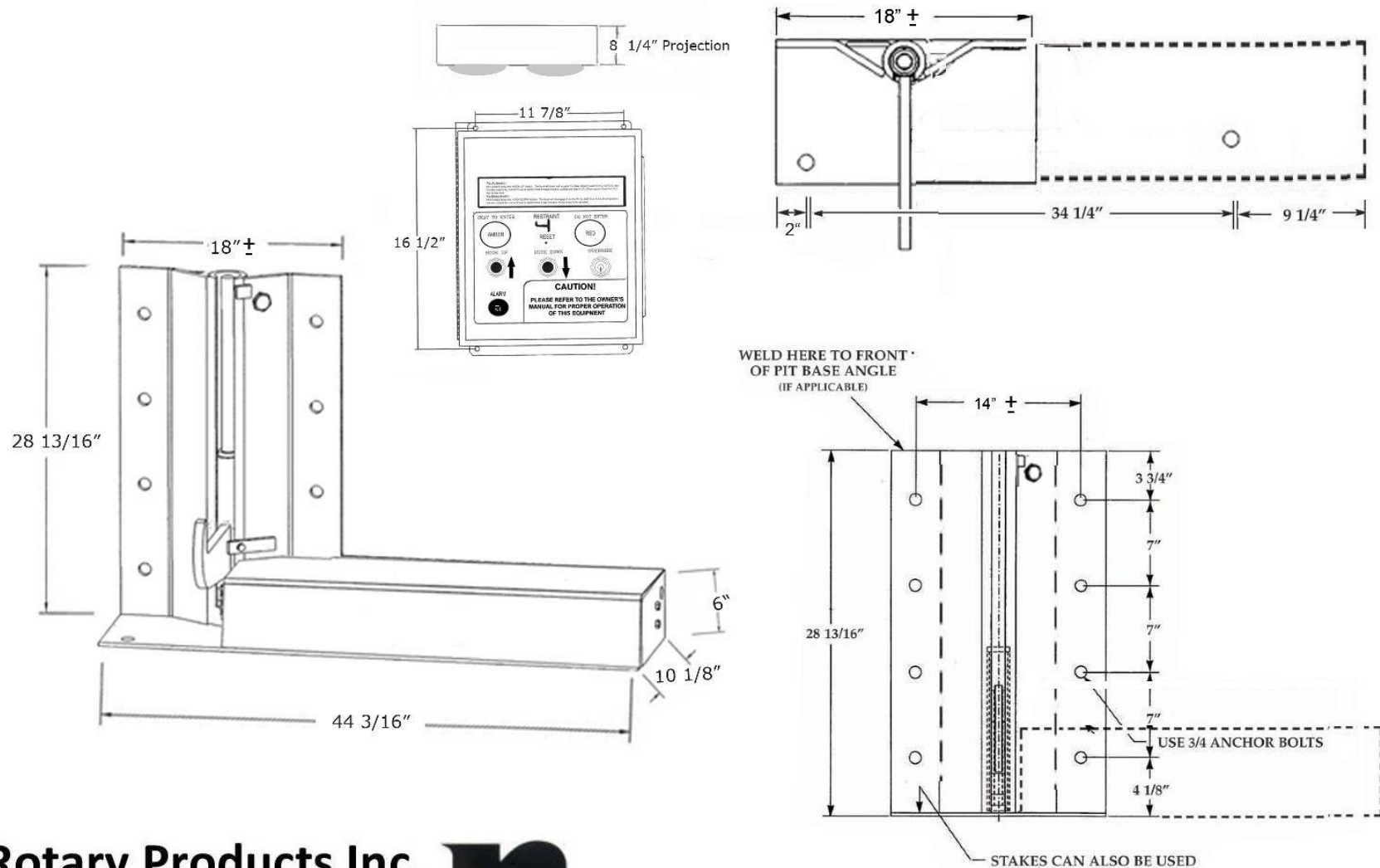


# "EVR650" Series Electrical Truck Restraint Detail



**Rotary Products Inc.**

202 East High St. PO Box 370 Ashley Ohio, 43003  
 Phone #: 1-800-457-5251 Fax #: 740-747-2188



**JOB**

# "EVR650" Series Electrical Truck Restraint

02/13

## STANDARD FEATURES

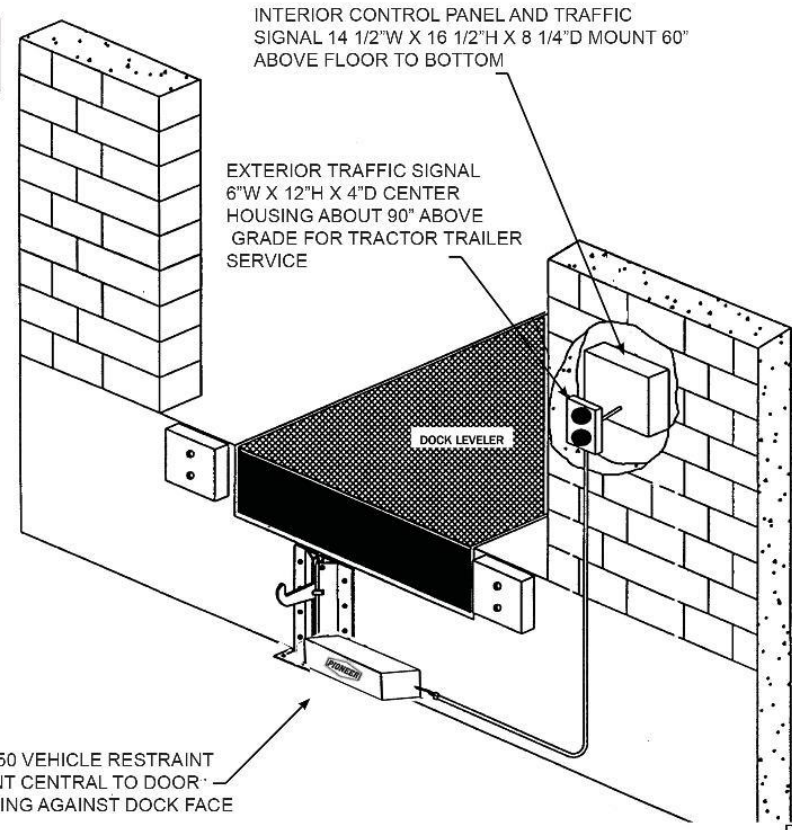
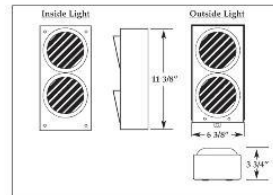
- ✓ Automatic unit provides in excess of 50,000 lbs. restraining force
- ✓ Wide 12" - 30" operating range
- ✓ Captures and holds all legal ICC bars
- ✓ Non-impact operation - designed to meet 1998 ICC regulations
- ✓ Positive contact hook automatically floats up or down with trailer
- ✓ Automatic inside/outside light system
- ✓ Complete inside/outside sign package included
- ✓ Bolt hole pattern designed for optional holding force
- ✓ Low maintenance
- ✓ Approximately one (1) hour installation time

(Not including electrical wiring).

## OPTIONAL FEATURES

- Steel mounting plate for new construction
- Steel blockouts for bumper projections greater than 4" including edge-of-dock levelers
- Template for pre-mounting attachment bolts

## INSIDE/OUTSIDE TRAFFIC DOCK LIGHT PACKAGE WARNING SIGNS



EVR650 VEHICLE RESTRAINT MOUNT CENTRAL TO DOOR OPENING AGAINST DOCK FACE

## Rotary Products Inc.

202 East High St. PO Box 370 Ashley Ohio, 43003  
Phone #: 1-800-457-5251 Fax #: 740-747-2188

