

## SECTION 1

## INSTALLATION INSTRUCTIONS RECEIVING AND HANDLING

### RECEIVING:



**WARNING!** Use caution when unbanding the EOD Leveler. Keep hands clear of pinch points and wear appropriate safety attire - Glasses, Gloves, and Work Boots.

Check for possible damage or missing parts immediately upon receipt of unit. Note any damage on receiving papers.

Prepare any claims against carrier if necessary.

**NOTE:** Damage noticed after receipt must be reported to carrier within 15 days.

### HANDLING:



**WARNING!** Use caution when lifting or moving the EOD Leveler. **DO NOT ATTEMPT** to lift without suitable hoisting equipment capable of lifting as much as 600 lbs.

Unit is easily handled for installation by hooking a heavy chain to each buttonhead rivet (EDE) or hooking the chain to the center plate (BLE).

## INSTALLATION INSTRUCTIONS INSTALLATION

### GENERAL INFORMATION:



**DO NOT EXCEED DOCK LEVELER CAPACITY. OVER LOADING DOCK LEVELER COULD RESULT IN SERIOUS INJURY OR DEATH.**

Edge of Dock Levelers are designed to service trailers 5" above to 5" below dock level.

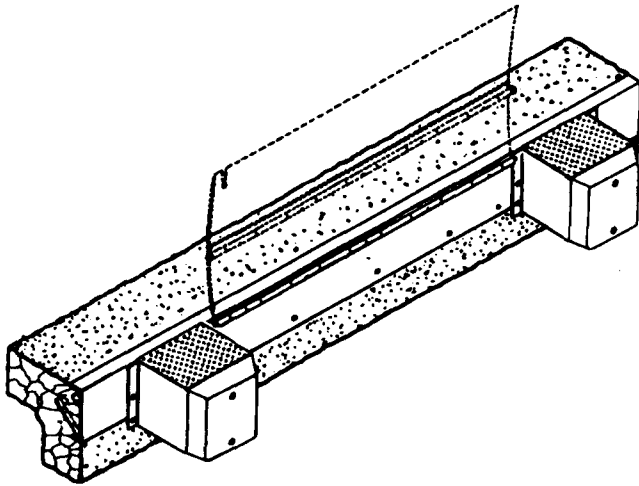
The dock levelers are shipped banded without tension on spring. Adjustment should be accomplished when installed.

Prior to installation, clean the dock face and dock area.

All prepunched holes are 13/16" diameter. Use 4" to 6" x 3/4" anchor bolts.

**WARNING:** Before you start to install the leveler, use proper safety signs and barriers to separate the work area from the remainder of the dock.

Illustration: 1

**WELD ON—NEW CONSTRUCTION**

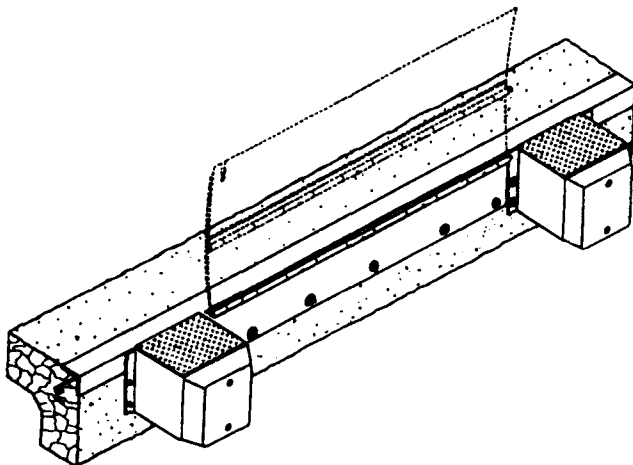
Use when dock edge vertical steel is 8" or wider. At dock edge, mark the center of chosen leveler location. Mark dock edge 33" either side of center (36" for 72" models; 39" for 78" models; 42" for 84" models).

Locate leveler with top of rear hinge flush with top of dock. This will place top of base plate approx. 1/4" below dock surface.

Tack weld ends of base plate to dock face steel, the top edge of base plate being 1/4" below dock. Tack weld both bump blocks at left and right ends of leveler allowing 1/4" space for weld between base plate ends and bump block.

**Continuous weld** bump blocks and base plate along top and all vertical edges while holding leveler firmly against dock. Disregard prepunched holes.

Illustration: 2

**WELD ON/BOLT ON—EXISTING CONSTRUCTION**

Use when dock edge steel is securely anchored, but not adequate for weld-on method.

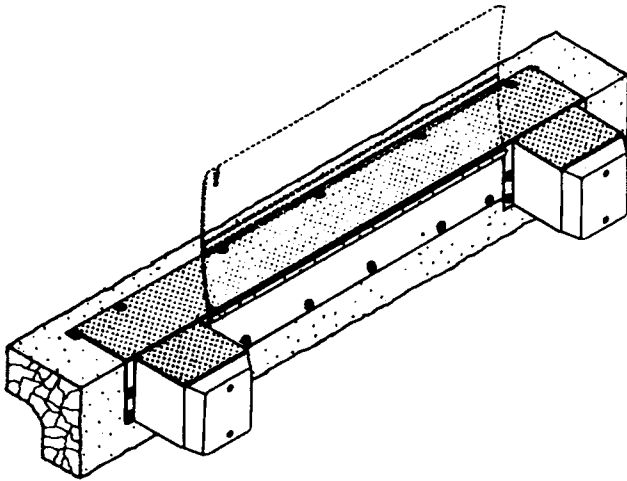
Complete all steps of instruction under "Weld On—New Construction."

Bolt leveler and bump blocks to dock face using all 13/16" prepunched holes furnished.

## SECTION 1

## INSTALLATION INSTRUCTIONS INSTALLATION

Illustration: 3



### WARNING

All anchor bolts must be installed in accordance with the manufacturer's instruction. Improper installation may result in serious personal injury or death.

DO NOT install anchor bolts in cracks of expansion joints in concrete. Installation in cracks or expansion joints may cause the anchors to come loose and pull out. Use of improperly installed anchor bolts may result in serious personal injury and/or death.

### BOLT ON + APPROACH PLATE — EXISTING CONSTRUCTION

Use when dock edge has no steel, or steel is poorly anchored, and dock face is adequate for bolting. Mark and drill holes for dock leveler centered 6-1/4" below dock edge; base plate to be raised 1/8" above dock edge for welding to approach plate. Install two (2) anchor bolts in end holes, position leveler on bolts and partially tighten nuts to hold leveler secure.

Place approach plate in position on floor, front edge being 1/8" behind base plate. Mark floor along rear edge of approach plate.

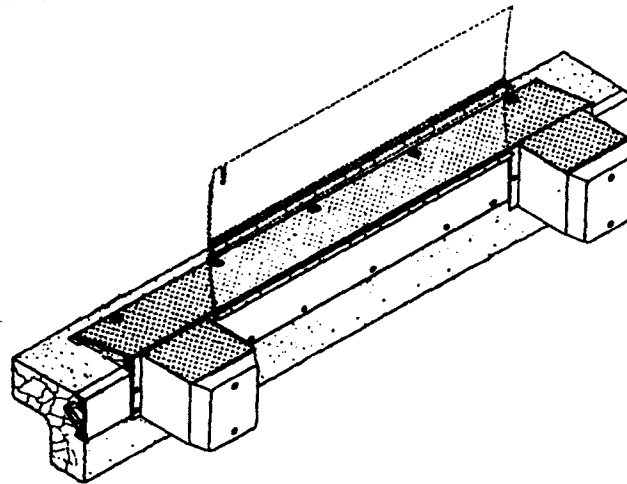
Slide plate forward 2", tack weld to leveler and use as a guide for cutting groove in floor along entire width (long dimension) of approach plate. Groove to be 2" wide and 1/8" deeper than thickness of approach plate.

Break plate loose from leveler. Position approach plate in groove and tack weld to leveler base plate. Drill holes in floor using plate holes as guide. Install anchor bolts in plate (See General Information page 1-1). Weld and grind bolt heads to approach plate to a smooth dome shape. **Continuous weld** approach plate to top of base plate. Complete bolting phase of unit.

### NOTE:

All anchor bolts lengths must suit local codes and conditions. Type and depth of concrete will determine type and length of anchor bolts required.

Illustration: 4

**WELD ON AND RAISE APPROACH PLATE**

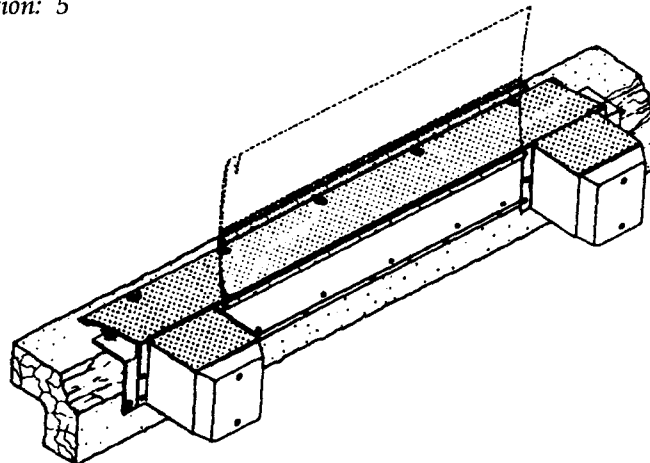
Use when dock edge is sound but height is less than adequate (bolting may also be required). At dock edge, mark the center of chosen leveler location. Mark dock edge 33" either side of center (36" for 72" models; 39" for 78" models; 42" for 84" models).

Raise leveler and bump blocks to desired height (3" max.), and weld back of base plate to dock edge steel. Tack weld both bump blocks at left and right ends of leveler allowing 1/4" space for weld between base plate ends and bump block.

Cut groove in floor, position approach plate at top edge of base plate and tack weld to unit and bump blocks. (See Illustration 3 for details.)

Complete bolting phase of installation, then **continuous weld** all points of contact between leveler, dock steel and approach plate.

Illustration: 5

**FORMED ANGLE-WELD ON—RAISED APPROACH PLATE**

Use when dock edge is badly crumbled and dock edge is slightly low.

Unit must be raised approximately 2" in this application!

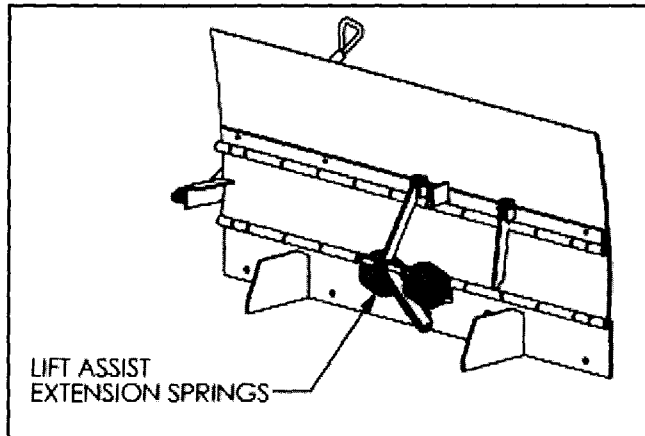
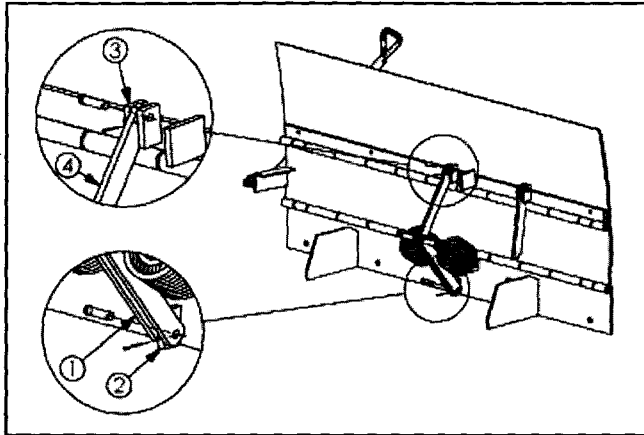
Position formed angle at desired location, mark holes, remove angle, drill holes and install angle. Install unit and approach plate according to methods described for "Existing Construction" (See Illustrations 3 & 4).

## SECTION 1

### WARNING

**WARNING! DO NOT** allow lip and ramp to fall free. Allowing dock leveler to fall free could result in dock leveler coming free from dock or damaging linkage resulting in property damage, serious injury and/or death.

## SECTION 2



Loading Dock Equipment – BLE/EDE Edge of Dock Mechanical Leveler

## INSTALLATION INSTRUCTIONS INSTALLATION

### BARLIFT MODELS

After installation of EOD and Bumpers is completed, remove bolt from lifting bar, insert bar into bracket (handle facing forward) and reattach bolt.

## MAINTENANCE

### ASSEMBLY

Units are shipped with lip linkages disconnected. These Linkages must be fully assembled before use.

To connect the lip linkages, first remove the clevis pin from the lower lip linkages (Item 1). Locate the lower linkages on each side of the base plate tag (Item 2). Reassemble the clevis pin and cotter pin. Bend the cotter pin to hold securely in place.

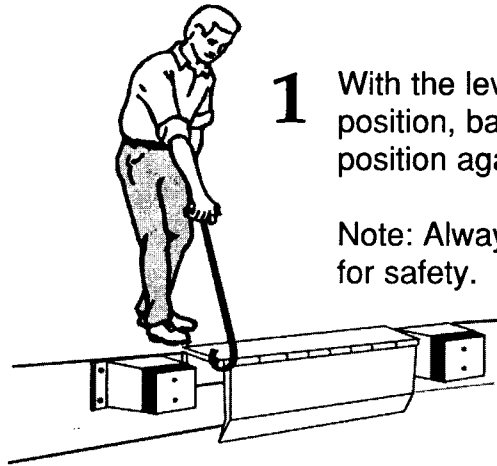
Next, remove the clevis pin from the lip plate tabs (Item 3). Insert the center link (Item 4) between the lip plate tabs, and reassemble the clevis pin and cotter pin. Bend the cotter pin to hold securely in place.

### ADJUSTING SPRING TENSION FOR LIFT ASSIST

Units are shipped with no tension on the lift assist springs. Once the lever is installed and assembled, tension on the springs can be increased.

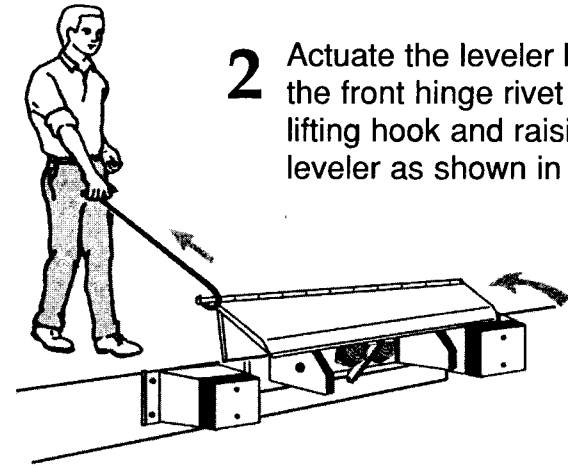
To increase tension on the lift assist springs, tighten the bolt and locknut extending through the center of each extension spring. Be sure to adjust the springs evenly by maintaining the same length of bolt exposure on each spring.

Warning: Do not over tighten the extension springs. Over-tightening the springs may cause the dock leveler to float or bounce during use, creating a dangerous operating condition.

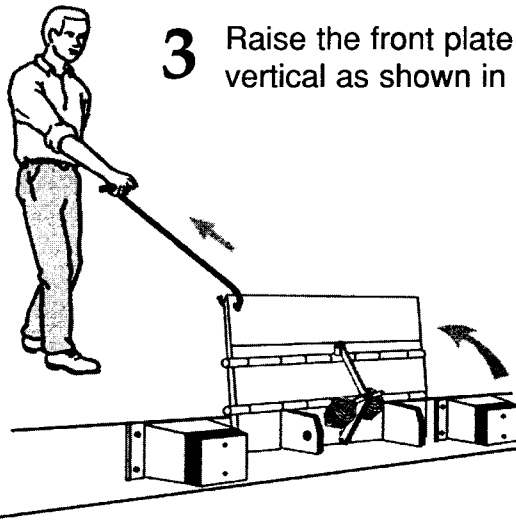


- 1** With the leveler in the stored position, back the truck into position against the bumpers.

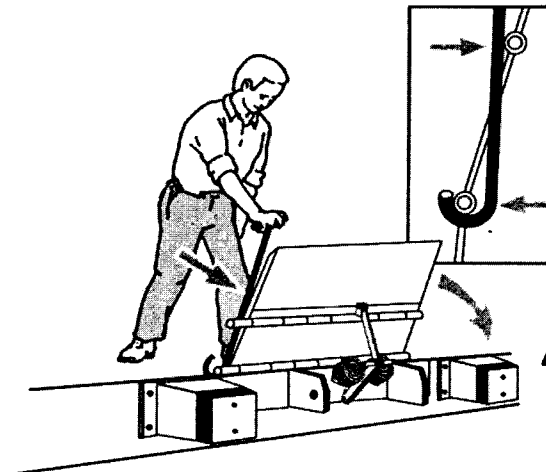
Note: Always chock the wheels for safety.



- 2** Actuate the leveler by hooking the front hinge rivet with the lifting hook and raising the leveler as shown in Fig. 2.

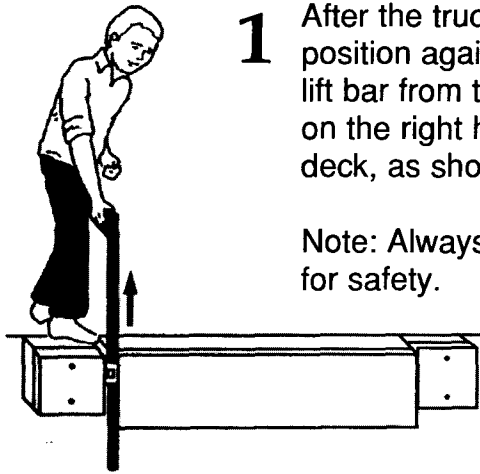


- 3** Raise the front plate (lip) to vertical as shown in Fig. 3.



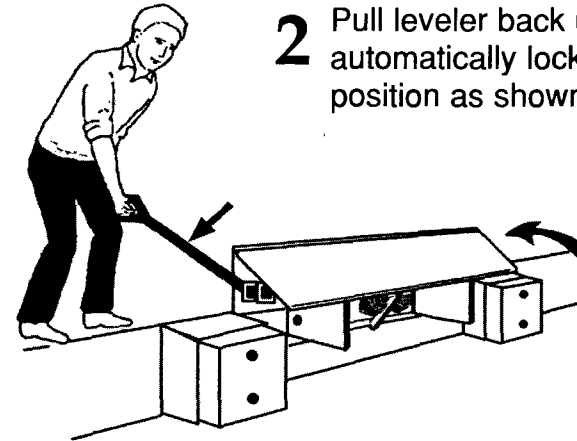
- 4** Place the lifting hook against concrete dock face and push the leveler into the truck as shown in Fig. 4.

- 5** When the truck departs the leveler automatically returns to the stored position.

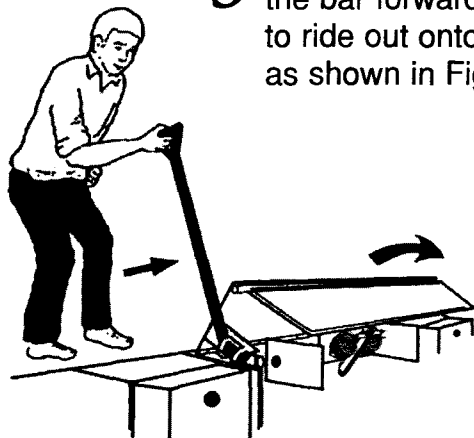


- 1** After the truck has backed into position against the bumpers, lift bar from the stored position on the right hand side below the deck, as shown in Fig. 1.

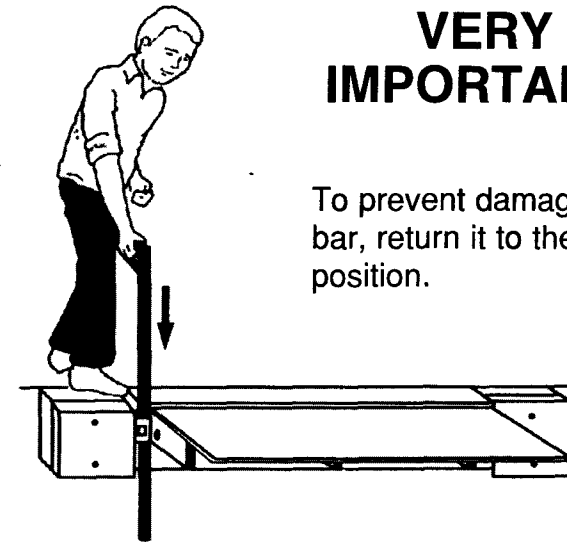
Note: Always chock the wheels for safety.



- 2** Pull leveler back until it automatically locks in raised position as shown in Fig. 2.



- 3** Using the bar as a lever, push the bar forward, allowing the lip to ride out onto the truck bed, as shown in Fig. 3.



**VERY IMPORTANT!**

To prevent damage to the bar, return it to the stored position.

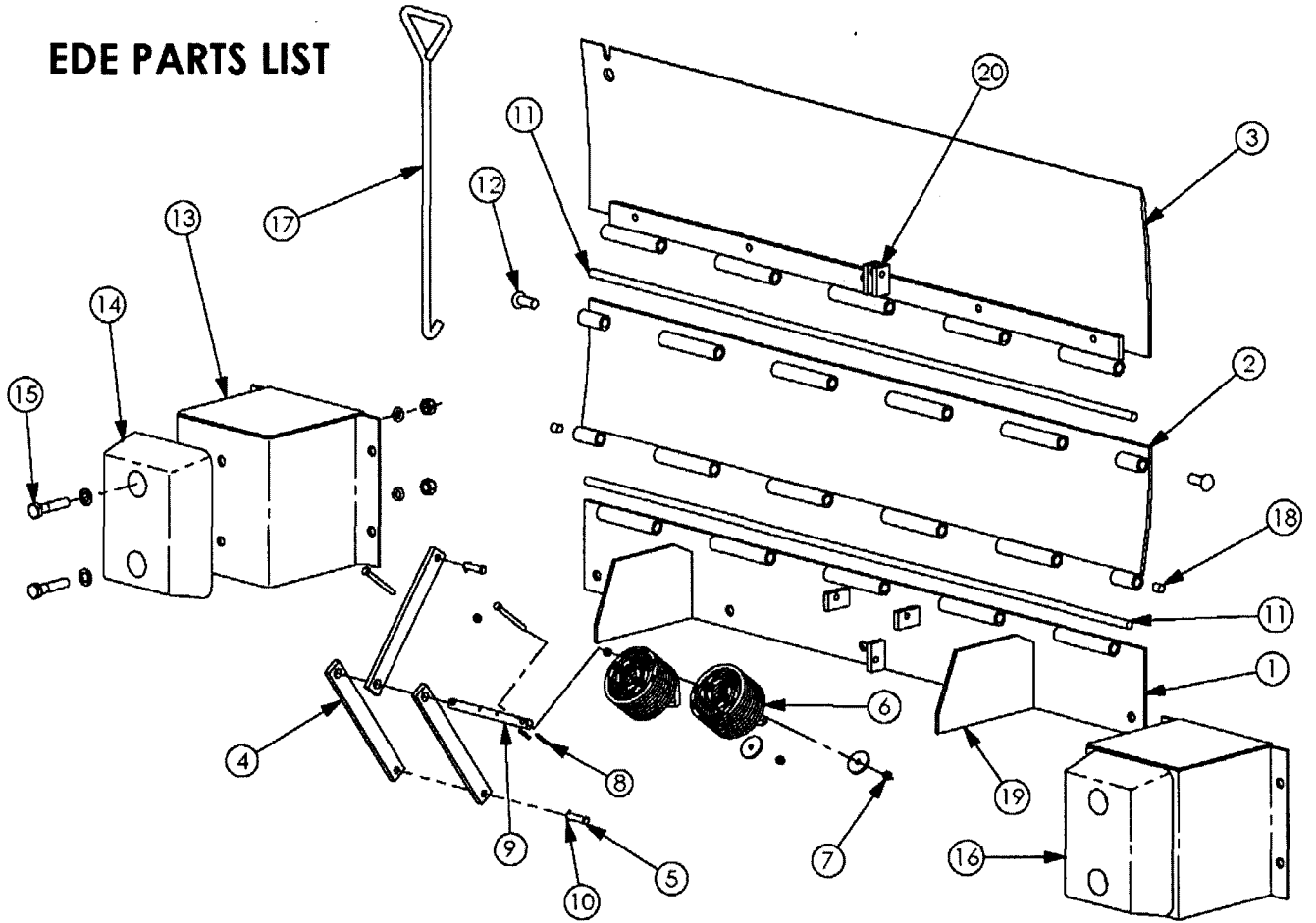
**SECTION 4**

**PARTS LISTS  
EDE**

ITEM NO.	DESCRIPTION	PART NUMBERS			
		EDE6620	EDE6625	EDE7220	EDE7225
1	BASE PLATE ASSEMBLY	2047	2047	2007	2007
2	CENTER PLATE ASSEMBLY	0153	2023	0183	2008
3	LIP PLATE ASSEMBLY	2060	2067	2065	2068
4	LINKAGE - LIP	2014	2014	2014	2014
5	PIN - CLEVIS 1/2" X 2"	A37	A37	A37	A37
6	SPRING - LIFT ASSIST	9616	9616	9616	9616
7	SPRING ADJUSTMENT HARDWARE SET	2087	2087	2087	2087
8	SPRING PIN - SLOTTED 3/16" X 1 1/2"	9632	9632	9632	9632
9	BAR - SPRING ATTACHMENT BLE	2015	2015	2015	2015
10	COTTER KEY 1/8" X 1"	0235	0235	0235	0235
11	HINGE PIN	0115	0115	0189	0189
12	RIVET 3/4" X 1 3/4"	0188	0188	0188	0188
13	BUMP BLOCK, STEEL WITH COVER	9270	9270	9270	9270
14	MOLDED BUMPER, 2 HOLE (4X10X13)	9243	9243	9243	9243
15	BUMP BLOCK HARDWARE SET, 2 HOLE	1787	1787	1787	1787
16	PUMP BLOCK ASSY, 2 HOLE	1771	1771	1771	1771
17	LIFTING HOOK	0141	0141	0141	0141
18	PLUG - END TUBE	1751	1751	1751	1751
19	GUSSET	0107	0107	0107	0107
20	LIP TAB	2010	2010	2010	2010



EDE PARTS LIST



ITEM NO.	DESCRIPTION	PART NUMBERS			
		BLE6620	BLE6625	BLE7220	BLE7225
1	BASE PLATE ASSY	2047	2047	2007	2007
2	CENTER PLATE ASSY	0153	2023	0183	2008
3	LIP PLATE ASSY	2049	2066	2022	20089
4	LINKAGE - LIP BLE	2014	2014	2014	2014
5	BAR - SPRING ATTACHMENT BLE	2015	2015	2015	2015
6	PIN - CLEVIS 1/2" X 2"	A37	A37	A37	A37
7	SPRING - LIFT ASSIST	9616	9616	9616	9616
8	SPRING ADJUSTMENT HARDWARE SET	2087	2087	2087	2087
9	SPRING PIN - SLOTTED 3/16" X 1 1/2"	9632	9632	9632	9632
10	COTTER KEY 1/8" X 1"	0235	0235	0235	0235
11	HINGE PIN	0115	0115	0189	0189
12	BAR LIFT HOLDER ASSY, BLE	2012	2012	2012	2012
13	BUMP BLOCK ASSY 2 HOLE	1771	171	1771	1771
14	BUMP BLOCK HARDWARE SET, 2 HOLE	1787	1787	1787	1787
15	MOLDED BUMPER, 2 HOLE (4X10X13)	9243	9243	9243	9243
16	BUMP BLOCK, STEEL WITH COVER	9270	9270	9270	9270
17	HANDLE ASSY BLE	2006	2006	2006	2006
18	GUSSET	0107	0107	0107	0107
19	PLUG - END TUBE	1751	1751	1751	1751
20	LIP STOP TAB	0503	0503	0503	0503
21	LIP RELEASE TAB	0503	0503	0503	0503
22	LIP KICKOUT BAR	2017	2017	2017	2017
23	LIP LINKAGE TABS	2010	2010	2010	2010
24	LIP KICKOUT PIN	0193	0193	0193	0193

BLE PARTS LIST

