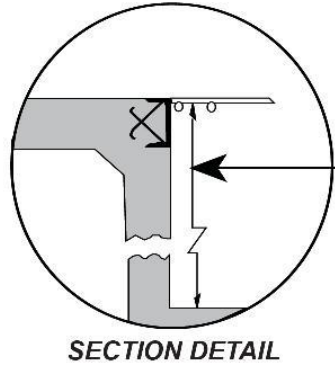
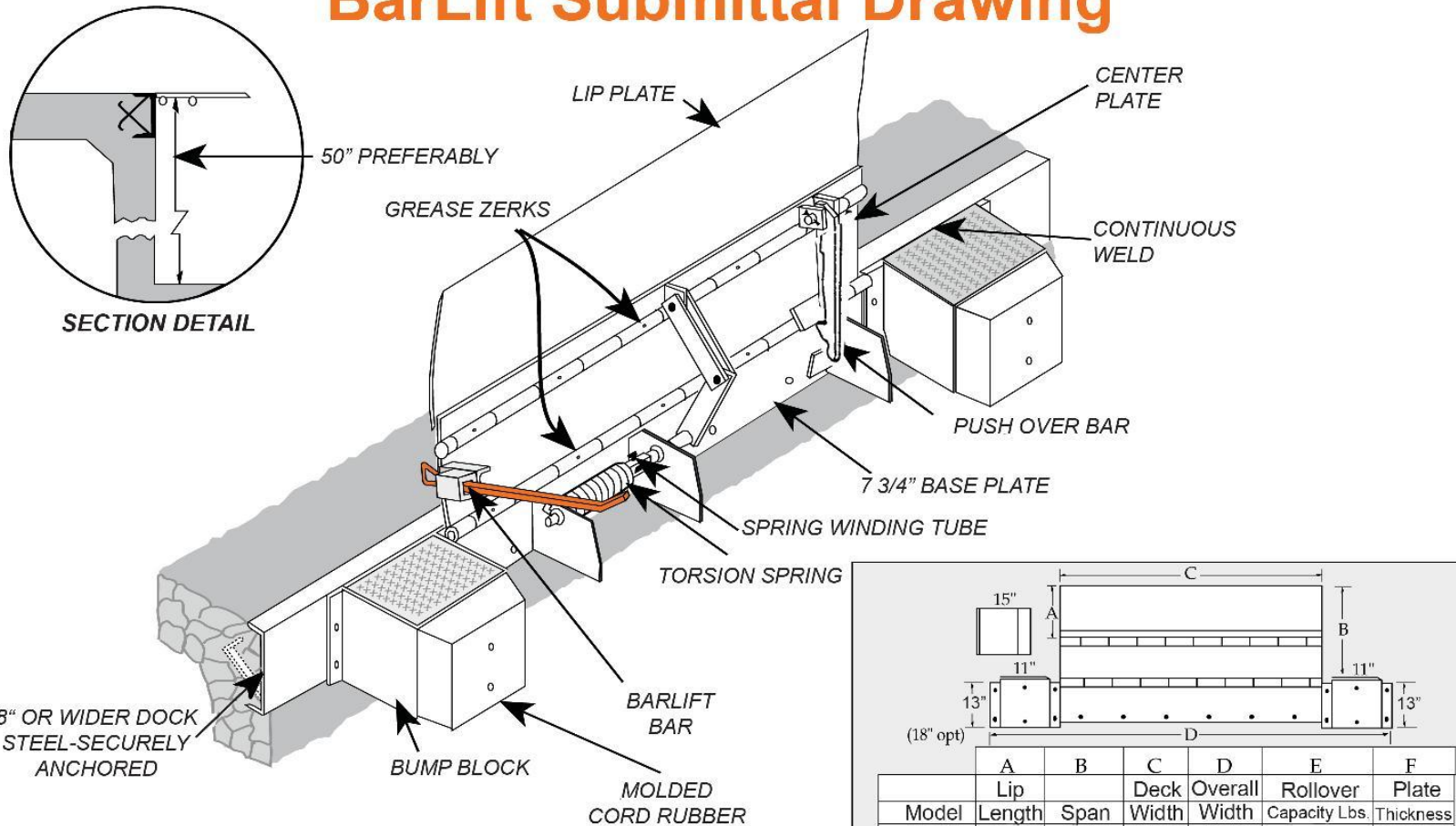


# BarLift Submittal Drawing



**NOTES:** Deck & Lip - 55,000 lb. min. yield steel.  
**30,000 lb. Capacity**, in stored position. 30,000 lb. units include C1045 cold rolled 11/16" rod and cold drawn seamless tubing (1-1/4" OD, 5/16" wall).

35,000 lb. Units Available

## Rotary Products Inc.

202 East High St. PO Box 370 Ashley Ohio, 43003  
 Phone #: 1-800-457-5251 Fax #: 740-747-2188



	A	B	C	D	E	F
	Lip Length	Span	Deck Width	Overall Width	Rollover Capacity Lbs.	Plate Thickness
Model BL66	15"	27 3/4"	66"	96"	20,000	3/8"
Model BL66H	15"	27 3/4"	66"	96"	25,000	7/16"
Model BL66-17	17"	29 3/4"	66"	96"	20,000	3/8"
Model BL72	15"	27 3/4"	72"	102"	20,000	3/8"
Model BL78	15"	27 3/4"	78"	108"	20,000	3/8"
Model BL84	15"	27 3/4"	84"	114"	20,000	3/8"

**SPECIFY JOB REQUIREMENTS FROM**

--	--	--	--	--	--	--

**JOB**